

ICON™ Back System with VariLock™ Hardware





Simple

Streamlined

Secure

More Features and Models

- Available in 4 models
 - Icon Back Low
 - Icon Back Mid
 - Icon Back Tall
 - Icon Back Deep
- Design Features
 - Simple yet secure hardware
 - Integrated permanent mount
 - Air-foam flotation cushion
 - Breathable cover
 - Aluminum shell



Icon™ Low Back



- Provides lower trunk positioning
 - Pelvis
 - Thoraco-lumbar spine
- Ideal for more active users
- Enhanced rollover cushion
 - Protects user from shell edge
 - Cushion and cover roll over
 - Neoprene pad sewn to cover
- Weight 3.5 lbs for 18" wide (1.5 kg for 45 cm)
- Max user weight 300lbs (136 kg)

Icon™ Mid Back



- Provides lower trunk positioning
 - Pelvis
 - Mid-thoracic spine
- Appropriate for a variety of users with fair trunk control
- Enhanced Rollover Cushion
 - Protects user from shell edge
 - Cushion and cover roll over
 - Neoprene pad sewn to cover
- Compatible with Fixed and PALs Laterals
- Available in Pediatric and Bariatric sizes
- Max user weight
 - 300 lbs (136 kg) for standard size
 - 400 lbs (181 kg) for bariatric size
- Weight 4.4 lbs for 18" (1.9 kg for 45 cm)

Icon™ Tall Back



- Provides upper and lower trunk positioning
 - Pelvis
 - Spine
 - Scapula
- For users that need moderate support
- Standard Roll Over
- Compatible with Fixed and PALs Laterals
- Head support can be mounted by drilling into shell
- Compatible for use with tilt/recline systems
- Available in pediatric sizes
- Max user weight 300 lbs (136 kg)
- Weight 5.6 lbs for 18" (2.5 kg for 45 cm)

Icon™ Deep Back



- Provides upper and lower trunk support
 - Pelvis
 - Spine
 - Scapula
 - Extra lateral trunk support
- For users that need maximum support
- Not compatible with Fixed or PALs Laterals
- Head supports may be mounted by drilling into shell
- Compatible for use with tilt/recline systems
- Max user weight 300 lbs (136 kg)
- Weight 6.5 lbs for 18" (2.9 kg for 45 cm)

Hardware Components



Permanent
Mount Screws



Hex Keys



Cane Bracket

Holster



Slide Brackets

Shell Brackets

Hardware Features

- Quick and easy to install
 - Two points of attachment on the canes
 - All hardware is pre-assembled
 - One tool (5/32 hex included) required for installation*
- Durable and strong
- Aluminum die cast Holsters
- Custom design fasteners for shell brackets



* Note: Use of Integrated Permanent Mount requires 3/32 hex key (included)

Hardware Features

- Positive Locking Design
 - Will not slip once installed and adjusted
 - Adjustor plate
 - Teeth to hold recline adjustment
 - Inset into cane bracket prevents rotation



Hardware Features

- Allows easy one handed removal of back
 - Rigid and folding wheelchairs
 - Can be lifted from multiple positions
- Adjustable with the user in the wheelchair
 - All screws are easily accessible from rear or side
 - All adjustments performed one tool
- Time saving for clinical evaluations
 - Hardware is the same on all models and sizes
 - Allows for different models/height backs to be trialed during evaluation with no change in hardware and minimal adjustment



VariLock™ Slide Caps

- Ergonomic design can be operated with finger, knuckle or hand
- Orange safety marking alerts user that Slide Caps are open
- Remains open for removal of the back
- Slide Caps lock securely when closed



Integrated Permanent Mount



- For those that wish to permanently mount their back system
- Integrated into the Holster
- Eliminates all play in the hardware
- Utilized by installing two screws using 3/32 hex wrench (included)

Hardware Components



Cane Bracket

- Fits 1" (25 mm) round canes
- Shims available to fit 7/8 (22 mm) and 3/4 in. (19 mm) canes
- Will not slip

Holster

- Guides slide bracket easily into place
- Adjusts for ± 20 degrees of recline
- Slides for depth adjustment of 1.5 in. (4 cm)
- Scale on top for angle adjustment

Hardware Components



Adjustor plate

- Positive locking design
- Teeth allow recline adjustment in 2° increments

Slide Cap

- Ergonomic design
- Simple push button operation

Shims

- Urethane material
- Press in place
- Will not slide on canes
 - Clean canes prior to installation
 - Alcohol pads included
- Sizes included with hardware
 - 1/8 in. (3 mm)
 - 1/4 in. (6 mm)



Other Features

Aluminum shell

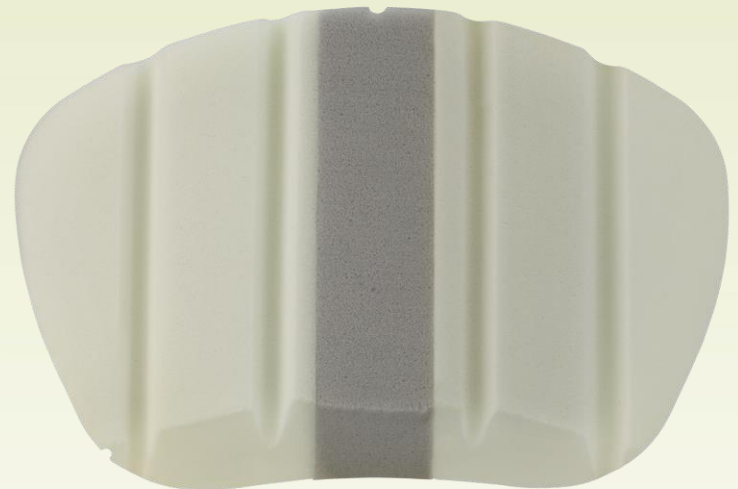
- Ergonomic Design
 - Handle with kick out
 - Lateral positioning
 - Less in hip area to accommodate more body shapes
 - Improved in trunk area to provide more support
 - Deep Back redesigned with same principles
- Aesthetic Design
 - Smooth contours
 - Pad printed logo



Other Features

Back cushion design

- Adjustable air-foam cushion
- Dual stiffness foam
 - Thicker and softer foam protects spine
 - Stiffer more firm foam provides positioning
- Resized with features to protect the user
 - Roll over top
 - Larger to increase overlap around shell edges
- Four channels to ensure cohesive fit with shell without bunching



Other Features

Innovative cushion cover design

- Spacer knit material
 - Improves air flow for temperature and moisture control
 - Does not pill as easily as standard mesh fabric
- Reticulated foam
 - Improves air flow for temperature and moisture control
 - Assists with pressure distribution
- Machine wash and air dry
- Meets ISO 7176-16 (Standard for resistance to ignition)



Other Features

Enhanced Roll Over Design

- Featured on Icon Low Back and Icon Mid Back only
- Provides additional protection for user
- Neoprene fabric sewn to cover provides flexible protection
- Cushion is attached to cover with hook and loop
 - Will not slide down inside cover
 - Functions as protective layer in the roll over



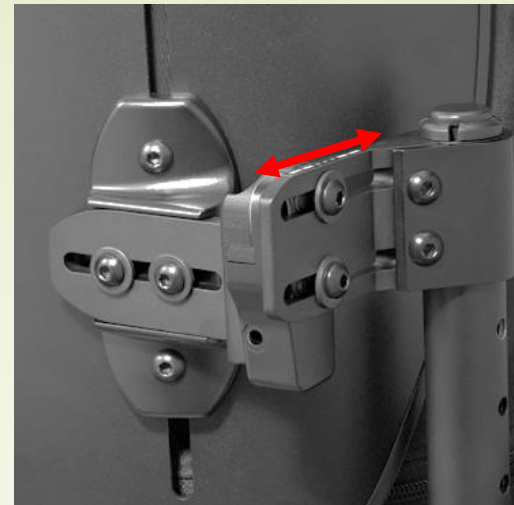
Installation Instructions

- Quick and easy
- Hardware is pre-assembled
- Clean canes with alcohol pads if greasy
- Attach the 2 cane brackets
- Loosen slide bracket screws
- Insert back
- Tighten slide bracket and cane bracket screws

Hardware Adjustment

Depth and Angle Adjustment

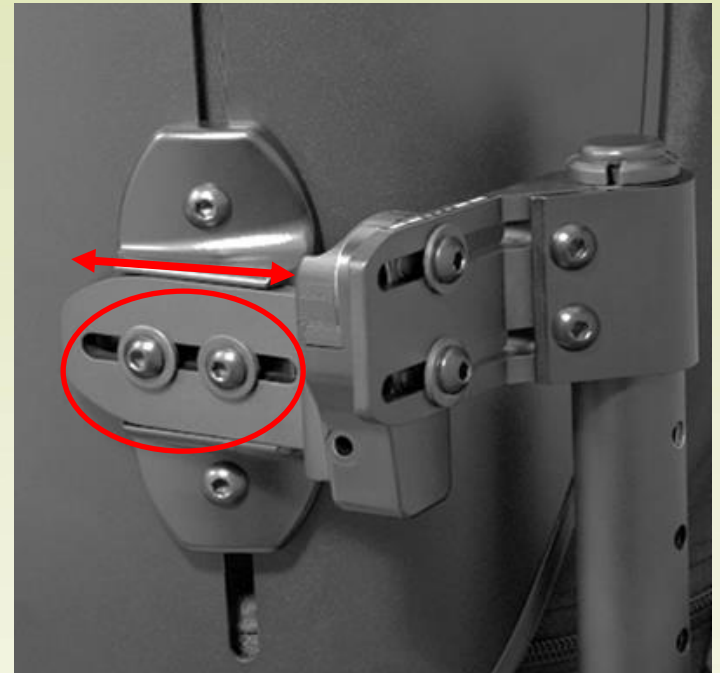
- Loosen adjustment screws $\frac{3}{4}$ of a turn only
- Slide and/or rotate hardware to desired position
- Use reference marks on top of holster for incremental adjustments
- Tighten adjustment screws
- Loosen slide bracket screws to allow centering of hardware
- Tighten slide bracket screws



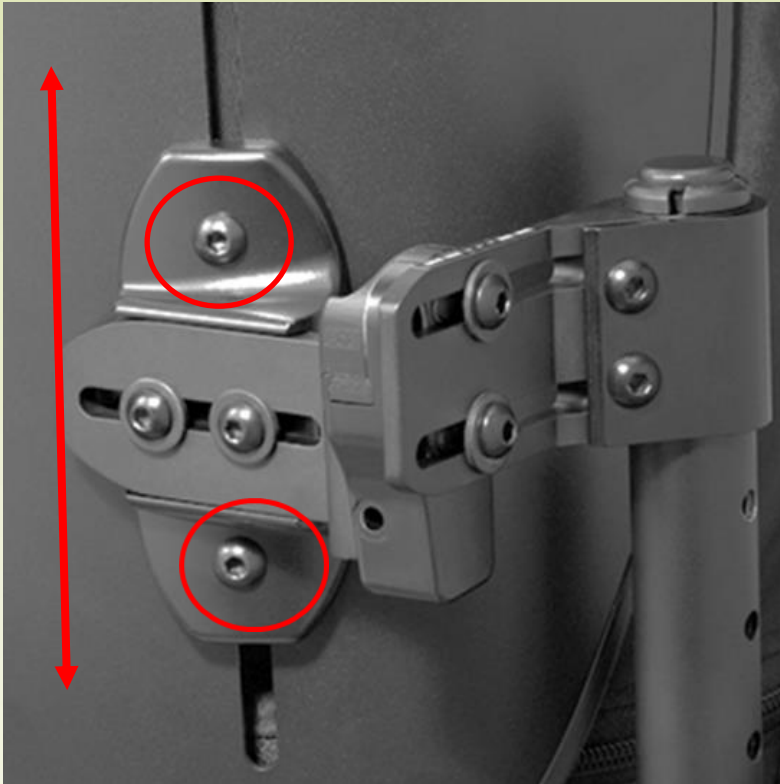
Hardware Adjustment

Horizontal Shell Adjustment

- Loosen the 2 slide bracket screws on each side
- Move shell laterally to desired position
- Retighten the screws



Hardware Adjustment



Vertical Shell Adjustment

- Loosen 2 screws on each side of the shell bracket
- Slide shell vertically to desired position
- Retighten screws

Troubleshooting

If the back system is binding or “sticky” with removal

- Allow slide brackets to “self center”
 - Loosen slide bracket screws on both sides
 - Allow brackets to move so that there is room in holsters
 - Retighten slide bracket screws
 - This should be done after any hardware adjustments

Troubleshooting

Check cane brackets

- Make sure they are installed at same height on canes
- Flag portions should be parallel

Check angle adjustment

- Holsters to make sure the angle is same on each side
- To correct
 - loosen top adjustment screw $\frac{3}{4}$ turn
 - press backrest backwards
 - tighten screw while holding backrest backward
 - repeat slide bracket self centering



Installation Configurations

Basic Installation

- The Icon back will ship with slide brackets pre-assembled for this configuration
- Cane brackets face rearward
- Slide bracket face forward
- Seat depth adjustability will meet most average needs
- Shell will move from 2.4" posterior of the canes to 0.9" posterior of the canes



Installation Configurations

Extra Depth Installation

- Increases range of seat depth adjustment an additional 1.5" from basic installation
- Cane bracket facing rearward
- Slide bracket facing rearward
- Shell moves from 3.9" posterior of canes to 2.4" posterior of canes



Installation Configurations

Growth Installation

- Will take up seat depth for desired circumstances such as growth set up for pediatrics
- Cane bracket facing forward
- Slide bracket facing rearward
- Shell will move from 0.3" anterior of the canes to 1.8" anterior of the canes



Installation Configurations

Extra Growth Installation

- Will take up seat depth for desired circumstances such as growth set up for pediatrics
- Cane bracket faces forward
- Slide bracket faces forward
- Shell will move from 1.8" anterior of the canes to 3.3" anterior of the canes



Use of Secondary Supports

- PAL™ Swing Away or Fixed Laterals
 - Compatible with Icon Mid Back and Icon Tall Back Systems
 - Can be installed using existing slots on the shell and drilling
 - Shell can be drilled for alternate placement



Use of Secondary Supports

The shell may be drilled to install other supports without voiding the warranty

- Head Supports
- Chest Harnesses
- Chest Belts
- Hip Pads



Supplemental Supports

PSIS Block (Posterior Superior Iliac Spine)

- Supports the pelvis at the level of the PSIS
- Promotes neutral pelvis and spinal extension
- May accommodate anterior pelvic tilt

Supplemental Lateral Supports

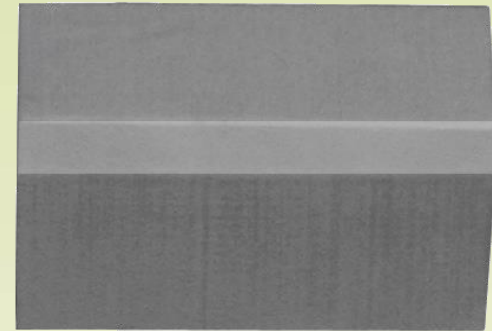
- Can be placed to provide extra lateral support or improve fit
- May help accommodate scoliosis or other postural deformities



Supplemental Supports

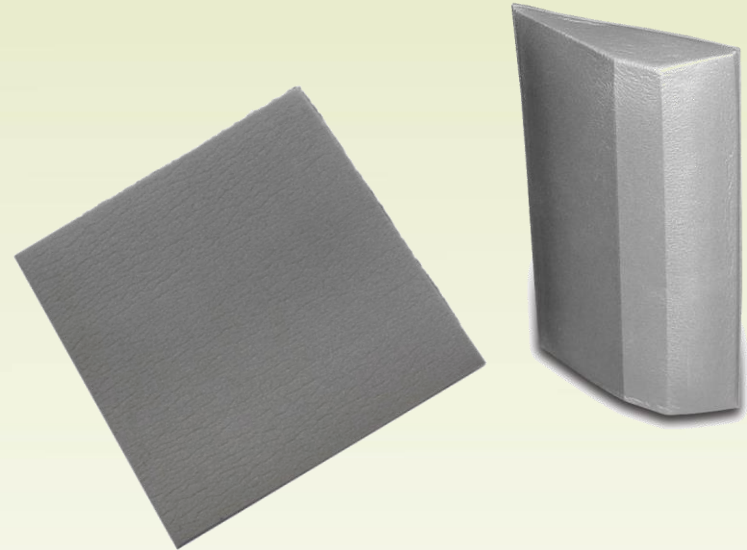
PSIS Block and Supplemental Lateral Support

- Ships with Icon Deep Back
- Can be ordered separately for use with other model Icon Back Systems



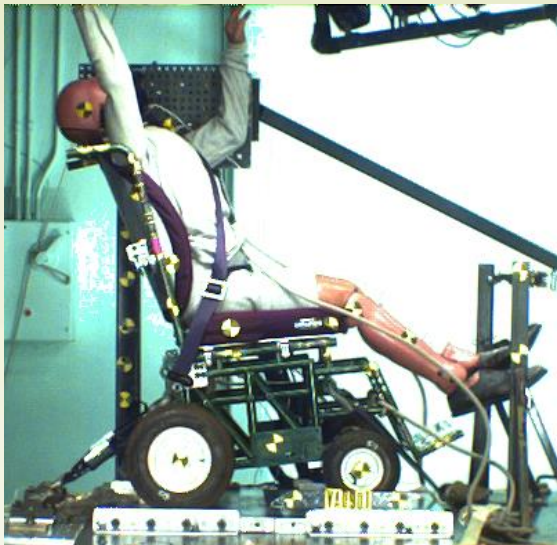
Cheat Sheets™

- Closed cell foam sheets
- Peel and stick adhesive
- Can be cut to custom shapes to be used for additional positioning or padding



Crash Tested

Icon Tall Back and Icon Deep Back have been dynamically tested and meet the requirements of ANSI/RESNA WC20/Vol 4 and conform with ISO 16840-4 for safe use of seating devices in motor vehicles when used with a wheelchair base that complies with ANSI/RESNA WC 19 and 7076-19.



WARNING

This seating system has been dynamically tested and meets requirements of ANSI WC20/Vol 4 and conforms to ISO 16840-4 for the safe use of seating devices for use in motor vehicles when used with a wheelchair base that complies with performance requirements of ANSI WC19 or ISO 7176-19.

A surrogate wheelchair base and Hybrid III Midsize Male ATD were used in the frontal impact test.

Any postural support devices and belts that have not been successfully tested in accordance with ANSI/RESNA WC18 or WC19 should not be relied upon as an occupant restraint in a vehicle.

Failure to use the appropriate equipment for restraint in a vehicle can result in serious injury or death.

For additional information regarding the use of seating systems in motor vehicles, refer to *Safe Use in a Motor Vehicle* provided with this system and at www.varilite.com

Crash Tested

- Icon Low Back and Icon Mid Back do not meet the requirements of ANSI/RESNA WC20/Vol 4 or conform with ISO 16840-4 for safe use of seating devices in motor vehicles
- For more information the Ride Safe brochure is available at www.varilite.com
- It is generally safest for wheelchair users to transfer to a vehicle seat and use the vehicle seat belt system or child safety seat



WARNING

This seating system does not meet requirements of ANSI WC20/Vol 4 or conform to ISO 16840-4 for the safe use of seating devices for use in motor vehicles.

To avoid serious injury or death, do not use this seating system in a motor vehicle.

For additional information regarding the use of seating systems in motor vehicles, refer to *Safe Use in a Motor Vehicle* at www.varilite.com.

Ride Safe

Information to help you travel more safely
in motor vehicles while seated in your wheelchair.



HCPCS Code Info

- Icon Low Back- **E2613** Positioning wheelchair back cushion, posterior width less than 22", any height including any type of mounting hardware
- Icon Mid Back- **E2615** Positioning wheelchair back cushion, posterior-lateral, posterior width less than 22", any height, including any type of mounting hardware
- Icon Mid Back Bariatric- **E2616** Positioning wheelchair back cushion, posterior-lateral, posterior width 22" or greater, any height, including any type of mounting hardware
- Icon Tall Back- **E2616** Positioning wheelchair back cushion, posterior-lateral, posterior width less than 22", any height, including any type of mounting hardware
- Icon Back Deep- **E2620** Positioning wheelchair back cushion, planar back with lateral supports, width less than 22", any height, including mounting hardware
- Replacement Covers- **E2619**



www.varilite.com

Visit www.varilite.com for the most current product information.
The following documents are available for download:

- Technical Guide for the Icon Back System
- Icon Back System Brochure
- Installation Instructions
- User Manual
- HCPCS Codes and reimbursement info (US customers)
- Ride Safe brochure

