

December 28, 2005

ATTENTION REHAB DEPARTMENT: Talon™ Field Inspection

Dear VARILITE Distributor,

Our records show that you received a Talon back support between September 2003 and November 2005. VARILITE requests that you inspect your customer's Talon bracket for possible fatigue cracks and to contact us immediately if you find any affected brackets. (Figure A)

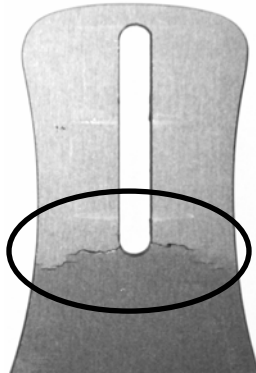


Figure A
Inspect front and back of bracket.

In the past 12 months we have received approximately 5 returns involving cracked Talon brackets. In mid November a dealer reported two customers broke their brackets as a result of falling over backwards in their wheelchairs. These two incidents occurred several months apart. Both wheelchair users experienced minor cut injuries from the broken hardware. Neither user required medical attention. Further investigation revealed in both cases the brackets appeared to have broken as a result of the forces applied when the users fell over backwards and struck the ground.

Because there is a risk of a cut injury in the event that the Talon bracket breaks, VARILITE immediately stopped shipment effective November 15, 2005 so that we could further investigate these reports and perform in-house testing.

Testing revealed that the Talon bracket will bend under impact force unless the bracket has an existing fatigue crack. If the Talon bracket has developed a fatigue crack, there is a possibility that it will break under substantial impact force. A fatigue crack can develop if the Talon bracket is mounted to the shell in the lowest possible position (Figure B). A load of 100 pounds or more must be repeatedly placed on the top edge of the shell, approximately 45,000 times or more, to develop a crack. We believe that under normal conditions wheelchair users are unlikely to develop a fatigue crack; however, because we are concerned about customer safety and product reliability, we ask that all Talon users inspect their bracket for cracks. Please make this inspection a part of your routine chair maintenance program as well.

If you find a cracked Talon bracket, please contact VARILITE customer service immediately at 1-800-827-4548. VARILITE will replace the bracket free of charge, and request the dealer return the cracked bracket for further investigation. VARILITE will pay for all shipping and handling charges.

We understand this inspection requires extra effort on behalf of dealers and we appreciate your cooperation very much. Please contact VARILITE customer service if there is anything we can do to assist with this Talon bracket inspection.

Attached you will find a detailed list of your Talon orders [bracket only] since September 2003, including order date, VARILITE invoice number, customer PO, part number, and part description.

Sincerely,

Randall Willett
Vice President of Medical, Cascade Designs, Inc.

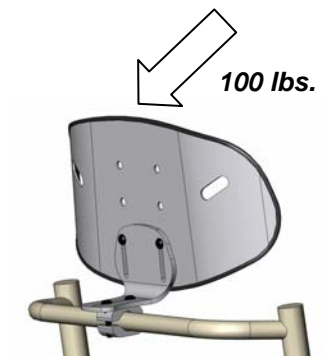


Figure B